

**PHOEBE  
LED**

www.cromptonlamps.com

## 17153 Adjustable Fire Rated LED Downlight



**5 Year  
Warranty**

**LED**

**Fire Rated  
30/60/90  
Minute**

**IP20  
IP65**

**60°  
Beam Angle**

**50.000h**

**CRI  
>80**



**-10°C  
+40°C**

**220 -  
240V AC**

**50/60  
Hz**



### Warning

1. Installation only to be carried out by qualified electrician
2. Please ensure surface is suitable and capable of holding the luminaire and driver weight
3. Pre-cut hole before installation, (see below chart for hole diameter)
4. Do not operate if product is damaged
5. IP65 rated front
6. This product is suitable for fire rated installations, Part L Compliant of UK Building Regulations, Part B Compliant BS476 Parts 21 and 22-Suitable for 30 minute 600mm/15mm single layer Standard Wallboard, 60 minute 600mm/12.5mm twin layer Fireboard and 90 minute 450mm/15mm twin layer Fireboard ceilings

**Voltage:** 220-240V AC

**CRI:** > 80Ra

**Lampless:** Built in LED

**Connection:** Loop in/out Toolfree connector

**Wattage:** 4W/6W/8W

**Beam Angle:** 60°

**Lumens:** >400lm/600lm/800lm

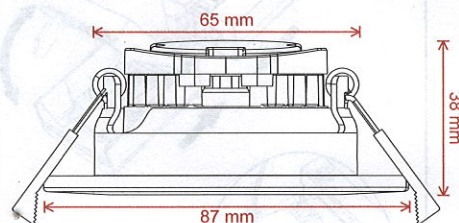
**Dimmable:** Yes

**Colour Temperature:** 2700K/3000K/4000K/6000K

**Cut Out:** 70mm

**Bezel Finish:** CHANGEABLE  
White, Black,  
Chrome, Satin Nickel, Brass

**Minimum Void:** 40mm



### Warranty

This product is guaranteed in the UK & EU for a period of 5 years from the date of purchase. The guarantee is invalid in the case of improper use, installation, tampering, removal of the QC/batch code label, installation in an improper working environment or installation not according to the current edition of the IEE Wiring Regulations (BS 7671). Should this product fail during the guarantee period it will be replaced free of charge, subject to correct installation and return of the faulty unit.

The provider is not responsible for any installation costs associated with the replacement of this product.

The provider has the right to alter product specifications without prior notification.

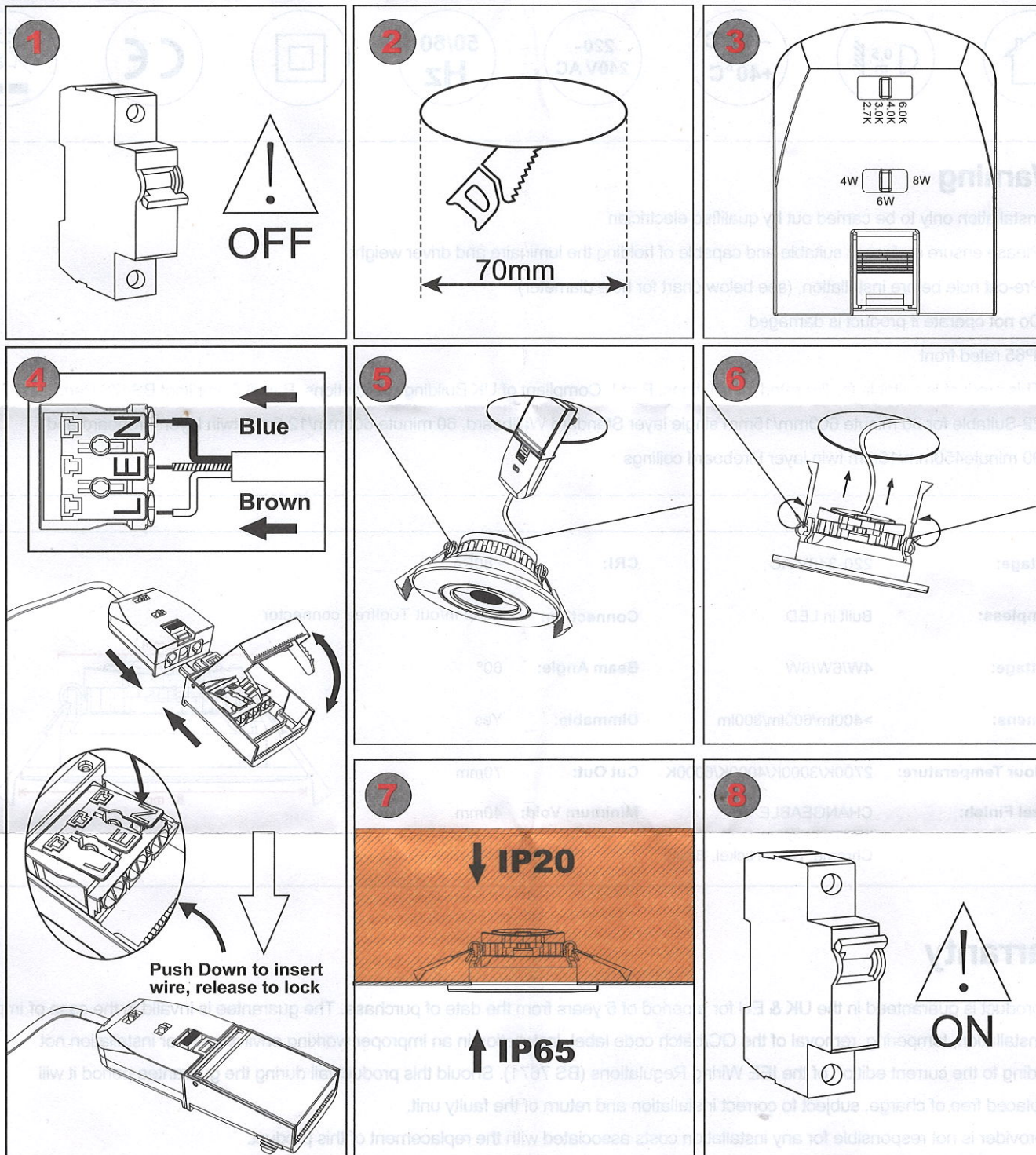




1. This product must be installed by a qualified electrician in accordance with instructions provided and in compliance with recognised electrical and safety regulations relevant to the country it is being installed.
2. The product and its associated control gear are designed to operate on 220-240v 50~60Hz.
3. This downlight range is designed to be installed in a ceiling tile/solid material with a minimum dimension of 3mm thickness.
4. This product is for Indoor use only. It can be covered with insulation material.
5. Minimum Clearance is 50mm above the installed fitting, and no product should be installed within 50mm of any joist.

### Specific Installation Details

1. Ensure the AC/mains power is not connected and cannot be reconnected during installation.(Figure 1)
2. For new installations use cutting tools suitable for the material and carefully cut the required hole to allow installation.(Figure 2)
3. Setting the Colour Temperature and Wattage by switching CCT & Watt on Driver Housing.(Figure 3)
4. Connect the AC/mains cable to the driver using the marked terminals provided. Incoming Cable connections are, L=Live power conductor(brown),N= Neutral power conductor(blue). E= Earth conductor (Green/Yellow) The driver offered is Class II.(Figure 4 )
5. Remove downlight from box and connect to the driver via the connection system provided. (Figure 5 )
6. Raise the springs and place the downlight into the tile cut-out ensuring that both the driver and mains power cable are not trapped. (Figure 6)
7. Once correctly connected, position the downlight fully into the aperture so that the outer flange is flush with the installed ceiling tile/solid material. (Figure 7)



Images for information only. Phoebe LED shall not be held liable for improper operation of the luminaire in circumstances where procedures and specifications have not been followed correctly. Crompton Lamps Limited 2024

Tel: +44 (0) 1274 657 088 Fax: +44 (0) 1274 657 087 Web: [www.cromptonlamps.com](http://www.cromptonlamps.com)